

# COCKBURN

CITY OF COCKBURN OFFICIAL NEWSLETTER ISSN 1035 - 0956 No. 49 AUGUST/SEPT 2002

# SOUNDINGS

## Mayor's Message

Despite rapidly increasing insurance costs and extra services and facilities required by the community an average increase of only 4% in rates is provided for in this year's budget.

In a total budget of over \$48M, \$18.6M is collected in the form of rates from households and businesses and the balance is provided by Government grants, fees for services provided and transfers from reserve funds.

In formulating the 2002/03 Budget your Council has endeavoured to meet the needs of all its residents at a minimum cost whilst achieving a balanced budget. Some of the highlights of our budget are set out below.

Council continues to realise the value of protecting and conserving our environment with \$500,000 being set aside for management of environmentally sensitive areas.

An extra \$280,000 has been provided for improvement to our Parks and Reserves, with \$200,000 also being allocated for the continued implementation of the City's Greening Plan.

**'Average  
Rate  
Increase  
4%'**

Almost \$300,000 will be spent extending the bike paths in our City, in accordance with the Cockburn Bike Plan.

An amount of \$795,000 will be spent upgrading the pool and other areas at the South Lake Leisure Centre.

In addition to the major items outlined above, our Budget contains many items that will improve the quality of life for our community in accordance with our mission. This is to make the City of Cockburn the best place to live, work and visit in the Perth Metropolitan Area.

Full details of all the works and projects to be undertaken are contained in our Budget Papers. Copies of which are available at all our Libraries or at our Spearwood Administration Offices.



*Mayor Stephen Lee*

43 Britannia Avenue

BEELIAR WA 6164

Home Phone/Fax: 9434 1547



# Look Who's at Gateways Shopping Centre

## Major Stores

Action \_\_\_\_\_ 9414 5444  
 Woolworths \_\_\_\_\_ 9414 5222  
 Woolworths Liquor \_\_\_\_\_ 9414 5222

## Food

Donut King \_\_\_\_\_ 9498 5248  
 Gateways Chinese Restaurant \_\_\_\_\_ 9498 6313  
 Gateways Fish & Chips \_\_\_\_\_ 9414 6038  
 Good Life Health Foods \_\_\_\_\_ 9498 5000  
 Micachinos Cafe \_\_\_\_\_ 9498 5242  
 Oven Delight Patisserie \_\_\_\_\_ 9498 5599  
 Red Rooster \_\_\_\_\_ 9414 6759  
 Subway \_\_\_\_\_ 9498 5200  
 Wendy's \_\_\_\_\_ 9498 5508

## Fashion

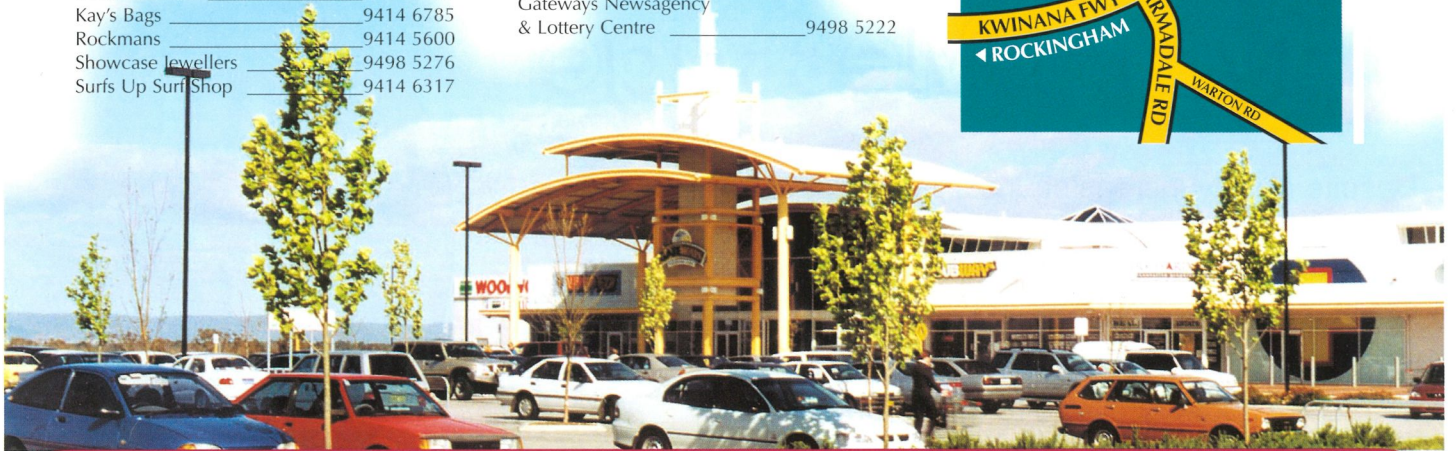
Gekko Fashion \_\_\_\_\_ 9498 6600  
 Kay's Bags \_\_\_\_\_ 9414 6785  
 Rockmans \_\_\_\_\_ 9414 5600  
 Showcase Jewellers \_\_\_\_\_ 9498 5276  
 Surfs Up Surf Shop \_\_\_\_\_ 9414 6317

## Services

Australia Post \_\_\_\_\_ 9498 5263  
 BankWest \_\_\_\_\_ 131718  
 Checkers (Mens Hairdressing) \_\_\_\_\_ 9414 6655  
 Clear Image Skin Clinic \_\_\_\_\_ 9498 5188  
 De La Rose Creations \_\_\_\_\_ 9498 5322  
 Farrington Drycleaners \_\_\_\_\_ 9498 5316  
 Fixit Multi Services \_\_\_\_\_ 9498 5958  
 Gateways Dental Centre \_\_\_\_\_ 9498 5122  
 Thomsons Lake Medical Centre \_\_\_\_\_ 9414 6777  
 Harvey World Travel \_\_\_\_\_ 9414 6788  
 Kodak Express \_\_\_\_\_ 9498 5255  
 OPSM \_\_\_\_\_ 9498 5855  
 Price Wave (Ladies Hairdressing) \_\_\_\_\_ 9414 6655  
 Richard Noble & Co. \_\_\_\_\_ 9414 5111  
 Success Public Library \_\_\_\_\_ 9414 5599  
 Video Ezy \_\_\_\_\_ 9498 5111  
 Gateways Newsagency  
 & Lottery Centre \_\_\_\_\_ 9498 5222

## Household

Knives Forks & Allsorts \_\_\_\_\_ 9498 5888  
 Pharmacy Plus \_\_\_\_\_ 9498 5977  
 Red Dot \_\_\_\_\_ 9414 6722  
 Tandy Electronics \_\_\_\_\_ 9414 5948  
 Thrifty Link Hardware \_\_\_\_\_ 9414 5333



## IT PAYS TO SHOP AT GATEWAYS!

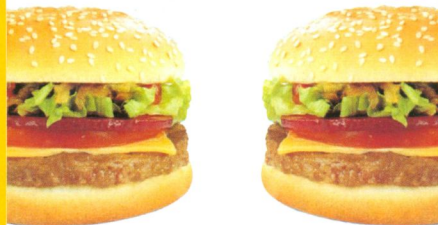
**WIN  
 BACK YOUR  
 RATES  
 at Gateways**



Gateways Shopping Centre will once again be giving residents in the City of Cockburn the chance to WIN back your rates to the value of \$600.00.

Simply complete the entry form attached to your shire rates for your chance to WIN. Every resident will be given one chance per week for four weeks to enter.

Competition starts on Monday 19 August 2002.



**OPENING  
 SOON**

**Celebrate Childrens  
 Book Week!  
 19 - 24 August 2002**



**Free childrens story telling  
 and colouring in competition.**

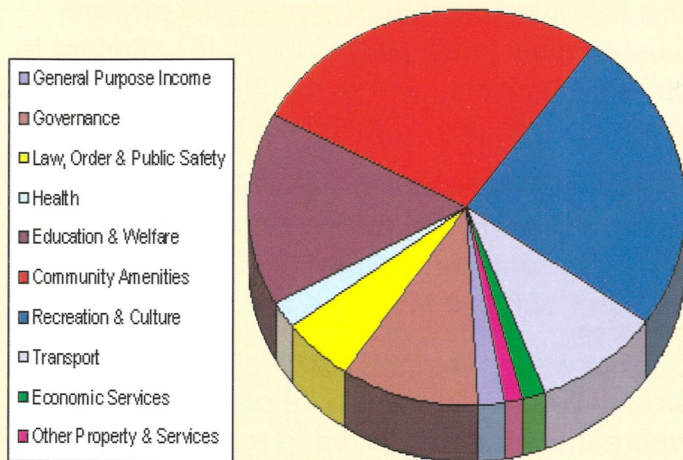
Call Samantha on 9414 5599 at the Success Public Library to book your child into storytime.



# Budget Overview

The following is an overview of the operating expenditure contained in the 2002/03 Budget under the various programs as set out in the Local Government (Financial Management) Regulations 1996. The figures shown do not include project funds carried forward from 2001/02.

**The following graph outlines the operating expenditure programs for the 2002/03 Budget.**



## General Purpose Income (1.9%)

Expenditure in this program relates to the costs of maintaining Council's rates records and the collection of rates and rubbish charges. This amounts to \$616,240 this year.

## Governance (10.4%)

This program includes costs relating to Elected Members, Customer Services, Client Services, Accounting Services, Information Technology, Records, Executive Support Services and Human Resources.

Full costing principles are used to allocate support service costs to individual programs. The reason for this approach is to provide a more accurate reflection of the cost of providing the service. For 2002/03 the final payment of the Douglas Inquiry costs (\$500,000) is included. This amount is repaid by the State Government. Total program expenditure for this year is \$3,445,163

## Law, Order and Public Safety (5.4%)

This section allows for the cost of animal and dog control, fire prevention, community safety, other law enforcement and Cockburn Voluntary

Emergency Services. Total expenditure for this year is \$1,766,702. The WAFB levy of \$310,000 is the largest single item in this program.

## Health (2.1%)

The Health expenditure budget includes funding for immunisation, health inspections that include the issuing of licences for various premises, pest control, health promotion and education, analytical fees, noise control and health clinics. Expenditure in 2002/03 is \$708,891.

## Education and Welfare (15.9%)

This expenditure relates to the provision of services to families and children, aged and disabled, senior citizens and pre-schools. Services provided to our residents include the Family Day Care Scheme, Out of School Care, Youth Outreach, Youth Festivals, Financial Counselling, Early Education, Aged and Disabled Services, Community Care Program, Respite Care, and Community Grants. Expenditure for this area is \$5,269,913, 70% of which is covered by Federal/State Government Grants.

## Community Amenities (26.9%)

This program includes costs associated with refuse collection, recycling and disposal, the operation of the Henderson Landfill Site, protection of the environment (including midge control), administration of the Town Planning Scheme and the maintenance of bus shelters.

The budget allows for a rubbish collection charge of \$161.00 that provides for a weekly household rubbish collection, fortnightly recycling service, three greenwaste collections, one bulk rubbish collection, and a tip card per year. The City's major recycling program will become fully operational in December 2002. At that time the contents of both the yellow top and green top bins will be taken to the recycling plant in Canning Vale. The contents of the green top bins will be converted into mulch. As a result of the full implementation of Councils recycling program it is anticipated that recycling 85% of all household waste will be recycled. Total expenditure for this program is \$8,895,942.

**Budget Overview continued pg. 4**



# Budget Overview contd.

## Recreation and Culture (25%)

The programs contained within this area include community halls and recreation centres the South Lake Leisure Centre, maintenance of all parks and ovals and beach areas, the provision of library facilities and cultural events. Total expenditure for this program is \$8,299,893.

## Transport (9.4%)

This program includes roads, drainage and footpath maintenance, streetscapes, streetlights and traffic signs. Total maintenance cost for these areas is \$3,101,482.

## Economic Services (1.6%)

Expenditure in this area includes such items as building control, swimming pool inspections and tourism promotion. Total expenditure is \$517,785

## Other Property and Services (1.5%)

This section includes public works overheads and control accounts, GIS Services, and engineering plant and equipment purchases not associated with road construction and maintenance. Total expenditure is \$501,323.

## CAPITAL EXPENDITURE

In addition to the operating expenditure outlined above, capital expenditure has been allocated to the following areas:

- ▶ Construction/Major Works - Buildings  
**\$1,350,176**
- ▶ Construction of Infrastructure Assets (Parks, Roads, Footpaths)  
**\$6,979,269**
- ▶ Henderson Landfill Site  
**\$3,100,000**
- ▶ Purchase of Plant, Machinery and Tools  
**\$2,327,950**
- ▶ Purchase of Furniture and Equipment  
**\$177,834**
- ▶ Transfers to Reserve Funds  
**\$4,317,960**

## COUNCIL RATES

Rates will be issued on 13 August 2002. There are two methods for paying your rates, payment in full by the due date OR payment by instalments. You will be entitled to a discount and be eligible for the incentive draw if you choose the first option and pay your rates in full

by 17 September 2002. For those not paying in full, the instalment option is available. You can pay by two instalments that will fall due

1st instalment	-	17/9/02
2nd instalment	-	21/1/03

**OR**

1st instalment	-	17/9/02
2nd instalment	-	19/11/02
3rd instalment	-	21/1/03
4th instalment	-	25/3/03

The first instalment (inclusive of any arrears) must be paid in full by the due date. Failure to pay the first instalment by the due date will forfeit your option to pay by instalments.

Full pensioners who meet the eligibility criteria below are entitled to claim a rebate of up to 50% off the current year's rates, or may defer payment of those rates.

Seniors who meet the following eligibility criteria are entitled to claim a rebate of up to 25%, where the rebate is limited to a maximum amount.

To be eligible for concessions under the Rates and Charges (Rates and Deferments) Act 1992, an applicant must be the owner and reside in the property on 1 July of the rating year and either:

Be in receipt of a pension and hold a pensioner concession card or State concession card (50%);

**OR**

Hold a Seniors Card issued by the Office of Seniors Interests and a Commonwealth Seniors Health Card (50%);

**OR**

Hold a Seniors Card only issued by the Office of Seniors Interests (25%).

You must register your entitlement with either Council or the Water Corporation (concessions only apply once your application is received and registered).

A pro-rata rebate may be available from the date of registration to Pensioners and Seniors who become eligible **AFTER 1 July** of the rating year.

# Councillors Corner

*By Central Ward Councillor Val Oliver*

For the last month I have had the pleasure of working with a group of Council officers and workers headed by Gail Wynne who are mainly based at the Coolbellup Community Centre. Our aim was the planning of **NAIDOC** week celebrations for the indigenous people of Coolbellup and surrounding areas, to be held at Burdiyar Hall in the centre of Len Packham Reserve

Wednesday 10th of July dawned and was wet and windy. Cancellations because the weather was too dangerous came in from the planned free rides for the youngsters. So on short notice every thing was to be under cover. We still had the karaoke and the didgeridoo player, who was a huge success. The veranda was on the protected side of the building and was able to house the barbecues, turning out both beef and Kangaroo sausages, which were enjoyed by all. Many thanks to the men from the Aboriginal Art Group.

The marquee housed the face painting. There were many beautiful sparkling, cute animal and spider decorated faces. The balloons as usual were a great attraction

Mayor Stephen Lee gave a welcoming speech and Patrick the Aboriginal elder opened the celebrations. Also in attendance was Coolbellup local Eric Wynne Commissioner of ATSIC. In all, over 200 people took part in this day of celebration. It was a great day! Congratulations to all that took part and may these celebrations grow bigger each year.



**NAIDOC CELEBRATIONS IN COOLBELLUP**

## Budget Overview contd.

Please contact Council where you have rate arrears outstanding on the property and you meet the eligibility criteria. You may be able to enter into an arrangement that entitles you to a rebate or deferment.

If your circumstances change - particularly with respect to your ownership or occupation of the property, or your eligibility as a Senior or Pensioner - you must notify Council and the Water Corporation. Your registration will be cancelled or amended, as appropriate.

Council Rates Section would like to advise that the City of Cockburn is now participating in **CENTREPAY**, Centrelink's direct deduction facility. Should you wish to avail yourself of this service, please contact Council's Rates Section on 94113475.

If you are having financial difficulties and will be

unable to participate in the formal instalment scheme, you can make a written application to the Chief Executive Officer. Please note that any other arrangements will only be approved if financial difficulty is evident.

The City of Cockburn has a free and confidential Financial Counselling Service available to ratepayers. Should you wish to avail yourself of this service, you need to ring to make an appointment in Atwell (94146302) or Coolbellup (93311174). If you think there is a chance you may need this service in the future don't wait - call now.

There will be a standard administration fee of \$20.00 applicable to alternative arrangements for the payment of rates.

You will be entitled to a discount and be eligible for the incentive draw if you choose the first option and pay your rates in full by 17 September 2002.



# HOT SUMMER NIGHTS...AND MIDGES

The arrival of spring and summer can often herald an increase in the number of midges. Midges are non-biting insects that spend most of their lives as larvae in the wetland sediments. They emerge as flying adults for a brief period (usually only a couple of days) to breed and move to other areas. They can emerge in such large numbers that they form large swarms. This is especially the case around those wetlands, which are polluted with nutrients (often referred to as eutrophic wetlands), such as North Lake, Bibra Lake and Yangebup Lake.

Midges pose no significant health risk, but the swarms they form can become a nuisance when they are blown into residential areas and affect outdoor activities.

Summer is when the midges are potentially at their worst because the warmer water temperature speeds up their development and increase their numbers in a shorter period of time.

A number of steps can be taken around the home to reduce the impact of midge:

- ▶ Reduce the number and wattage of outside lights, use yellow lights or sensor security lights.
- ▶ Use outdoor foggers (insecticides) in accordance with manufacturers instructions when entertaining outdoors.
- ▶ Keep windows and doors closed and install fine mesh insect screens.
- ▶ Place electrocuting light traps around your house.
- ▶ Avoid light coloured surfaces around your home as these reflect light and attract midge. Green and dark blue surfaces are most desirable
- ▶ If you live close to a wetland use trees or shrubs to screen lights.

To help control midge numbers within eutrophic wetlands, the City may undertake aerial treatments when midge numbers are high. On these occasions there are signs placed around the perimeter of the wetlands. Officers are on hand to advise and direct the public.

*Information and pamphlets regarding midge can be obtained by calling Councils Environmental Services Section on 9411 3505.*

# Port Catherine, Port Coogee, Port...?

Council has been concerned for some time that Port Catherine is a name not associated with the City of Cockburn and another name should be considered. The Mayor and Councillors were surveyed with responses showing a preference for "Port Coogee".

Before making its final decision Council would like to hear from you. Do you have any suggestions on what the development should be called or would you like it to remain Port Catherine? Now it's your turn. Tell us what you would like Port Catherine to be called?

## Post your suggestions to:

Port Catherine Alternative Name Suggestions

Cockburn Soundings, City of Cockburn

P.O. Box 1215

Bibra Lake DC WA 6965

My suggestion is:-

.....

# SOUTH LAKE RESIDENTS GROUP

*"make South  
Lake an even  
better place  
to live"*

The recently formed South Lake Residents Group's ultimate desire is to "make South Lake an even better place to live." The group endeavours to provide South Lake residents with a common voice and an enhanced sense of community.

The group has been meeting for approximately 4 months. "Issues discussed range from the beautification of the South Lake area, to establishing a youth meeting place, to the installation of bike paths," according to South Lake Residents Group secretary Sandy Fonseca. The South Lake Residents Group additionally promotes information to new residents about existing facilities and services located

within South Lake.

The South Lake Residents Group wishes to invite new members to its meetings. The meetings are held on the second Monday of each month at 7:30pm at the South Lake Ottey Family and Neighbourhood Centre on South Lake Drive, South Lake. The next two meetings are scheduled for September 9 and October 14 2002. The raising of any new issues or ideas is welcomed and encouraged.

If you want to make a difference to South Lake or want further information about the South Lake Residents Group please contact the group's secretary Sandy Fonseca on 9417 3151.

# Bibra Lake Fun Run

It is that time of the year again, the City of Cockburn is kicking off its annual Cockburn Classic Events with the Bibra Lake Fun Run organised by the Recreation Advisory Committee.

It is approximately a 6 kilometre run, depending on how many corners you cut around picturesque Bibra Lake.

This year it is being held on Sunday 15th September with the Run starting near the Big Yellow Tree on Progress Drive with the run itself kicking off at 9am.

We want anyone from Olympic time runners to those who will need a lunch break halfway round to participate.

The run has two main objectives, firstly, to get outdoors and be active. Secondly, as a fundraiser for community, sporting and

school groups. The entry fee is \$5 and half of all prepaid fees will be reimbursed to a group of your choice. Last year the Bibra Lake Primary School had the most number of entrants and later received a cheque for \$390. So for all those clubs out there looking for a fundraising opportunity, look no further, we do the organising, all you need to do is get as many people as you can to run under your name and wait for the cheque.

We are looking to get the most number of entrants this year ever, so if you have any questions or wish to register your interest in running please contact:

**Adrian Jarvis, Recreation Services  
Coordinator on 9411 3438, or at  
aj Jarvis@cockburn.wa.gov.au**



# A GRASS TREE GROWS IN COCKBURN

Earlier this year the Department of Housing and Works approached the City with a proposal to develop a site on Caffrey Place in Hamilton Hill for grouped dwellings. Council Planning and Environmental Officers undertook preliminary site investigations and identified the existence of approximately 300 grass trees (*Xanthorrhoea preissii*). These grass trees have significant environmental value, some were 2 metres high and estimated to be approximately 300 years old. Therefore their conservation was considered to be highly desirable.

The land owner (the Department of Housing and Works) provided their full support to the conservation of the grass trees. Given the high demand for the provision of housing by the Department, which is evident from the Department's accommodation waiting list, the development of the site was also considered to be of high importance.

These two conflicting issues would often see a less than desirable outcome. With the City

of Cockburn and the Department of Housing and Works working together and dedicated to the cause a successful outcome has been achieved. The grass trees were removed by the City's Parks Department and transplanted to the median strip when Spearwood Avenue was being upgraded. This was done with the full co-operation of the Department of Housing and Works.

The above project demonstrates that communication between local government and developers, in consideration of environmental factors, can result in a favourable outcome.

***The City thanks the Department of Housing and Works for their co-operation in achieving such a successful outcome.***



## WHY ARE THE SPRINKLERS IN THE PARK RUNNING IN THE RAIN?

From time to time residents may see sprinklers in parks and street gardens running during winter, sometimes while it is raining!

It would be reasonable for you to assume that Council had not heard there is a water shortage or have not realised that it is raining.

### **What is actually happening?**

Irrigation systems under the care and control of the City have been programmed to automatically activate once every two weeks during the winter period for maintenance purposes. In circumstances where industrial grade irrigation systems are left dormant during winter, it is common for them to malfunction when activated at the beginning of summer because of a build up of scale and algae in the pumps, pipes, valves and sprinklers. The result is loss of grass and shrubs requiring the use of even more water to re-establish them compared with that used to maintain the systems during winter.



To ensure that each system is running for the shortest possible time to achieve the maintenance objective, each group of

sprinklers has been set to run for a period of time no greater than that required for their control valve to fully open and then immediately begin to close down. This flushing cycle usually takes no longer than five to ten minutes.

By undertaking winter maintenance we ensure that the City's 135 irrigation systems complete with 1,334 control valves and approximately 16,000 individual sprinklers are functioning at the beginning of each summer period. In so doing, the aesthetic quality of grass and garden areas is not compromised and the City saves water in the long run.

**For more information, or to discuss the issue further, please do not hesitate to telephone the Manager of Parks, Allan Conroy on 9411 3476.**

## BEELIAR FETE

**SUNDAY 22 SEPTEMBER FROM 12 NOON TO 3PM.  
AT BEELIAR PRIMARY SCHOOL, THE GRANGE, BEELIAR.**

**FREE RIDES AND ENTERTAINMENT.**

**FACE PAINTING, FAIRY AND HALLOWEEN SHOP,  
CRAFT, PLANT AND CAKE STALLS.**

**SAUSAGE SIZZLE, LOTS AND LOTS MORE.**

**ORGANISED BY AND PROCEEDS TO THE BEELIAR P&C**



# Children's Book Week



This year the theme for Children's Book Week is "Book Week Book Feast". Although this week is generally focussed on school participation, the City of Cockburn's Public Libraries invite the general public to join in the celebration of stories and experiences at the following libraries:

## ***Success Library (Gateways Shopping Centre)***

The launch of Children's Book Week will take place at Gateways Shopping Centre at 6.15pm on Thursday, 15th of August. After the official launch by the Mayor, Stephen Lee, Librarian Samantha Hughes will announce the winners of the Colouring Competition and children will be entertained by storyteller and comedian Don Smith.

Storyteller Jenny Hill will also delight children with her stories at the Gateways Shopping Centre from 9.30am to 10.30am on Monday 19th of August, Wednesday 21st of August and Friday 23rd of August.

## ***"Book Week Book Feast"***

### ***Coolbellup Library***

If young children missed the launch of Children's Book Week they will have a second chance to be enthralled by Don Smith and his humorous stories on Wednesday 21st of August from 10.30am to 11.30am.

In keeping with Coolbellup Library's theme of Bush Tucker and the Bush, children will be able to see and touch Australian animals from Kanyana Wildlife Sanctuary on Friday 23rd August from 3pm to 4pm. Librarian Karen Stuart will also announce the winners of Coolbellup's Colouring Competition. Bookings are essential - Phone 9314 1695.

### ***Spearwood Library***

Storyteller Grant Cottrill is back for a repeat performance this year. Children of all ages (including adults) are welcome to hear Grant tell stories in his engaging style on Saturday 17th of August from 10.30am to 11.30am.

**THINKING OF STARTING A NEW BUSINESS? NEED TO KNOW ABOUT YOUR COMMUNITY? WANT TO KNOW MORE ABOUT YOUR CLIENTS?**

**EIGHTY20 STATISTICS DATABASE** will allow you to view demographic statistics and related business information from the latest census. The database allows you to create a profile of an area, for instance Cockburn, using basic community statistics and business data.

Access to the database is available through the City of Cockburn Library & Information Service. Please contact us on 9411 3491 or visit your local Cockburn Library for further details.



# Cockburn **EMBRACES** Recycling

We have now had our 240 litre recycling bins for over 12 months. Residents have quickly adapted to Council's co-mingled recycling service with 80% of residents putting their yellow-topped bin out for collection. This compares favourably to the 20% participation in the previous bagged service. The City is consistently collecting around 500 tonnes of recyclables per month.



## ***Are your recyclables contaminated?***

A recent audit of the materials collected in these bins also indicated an improvement in our contamination rate down from 16.31% to 14.95%. While this is an excellent effort in our first year we are still looking to completely remove green waste and polystyrene from the yellow topped bins. Green waste, polystyrene and other "contaminants", which should not be put in the recycling bin, are listed in the "A-Z Resource Recovery" section in your new recycling calendars.

***If you have not received your new 2002/2003 recycling calendar, please contact Leanne on 9411 3543.***

### **Diversion Resource Recovery Rather than Landfill**

From July to December last year, residents assisted Waste Services in recovering 3939 tonnes from our domestic waste stream,

rather than simply sending the material to the landfill. While there are considerable costs associated in diverting these materials from landfill, the Department of Environment has refunded the City of Cockburn \$34,291 for its efforts through the Resource Recovery Rebate Scheme. Council has also saved the significant waste disposal fees that would otherwise have had to be paid.

Your participation in the recycling and bulk verge collections saves everyone in Cockburn money.

### **Greenwaste bulk verge collection a report card**

7829 properties participated in the June greenwaste collection. While this represents a slight increase over the corresponding period last year, it still only equates to 30% of residents taking part in the bulk verge collection.

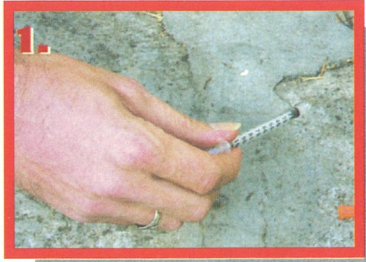
Council's annual program for bulk verge collections is promoted in Cockburn Soundings, and a flyer is delivered to letterboxes approximately a fortnight prior to commencement of each collection in the area. Prior to the bulk verge collection, signs advertising the collection dates are erected around the area. If you have any suggestions for improving this service please call Leanne on 9411 3543.



# NEEDLE AND SYRINGE SAFETY

Needles and syringes may be found at all sorts of locations. You might find one in your workplace, or improperly discarded in your yard or neighbourhood.

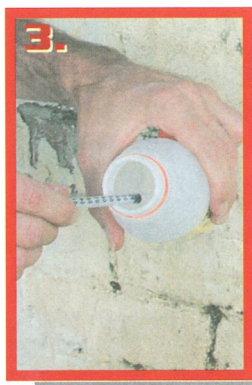
Don't panic! By following the simple directions below needles and syringes can be disposed of safely with no danger or health risk to you or your community.



1. When you find a discarded needle or syringe do not try to re-cap it. Simply pick it up carefully with the sharp end away from the body.



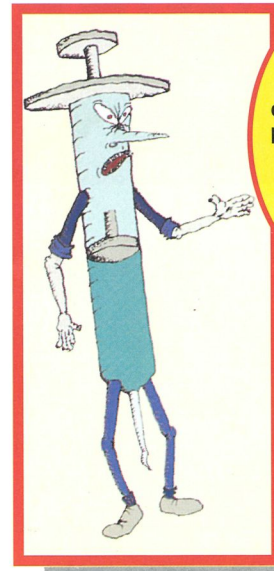
2. If you are at your workplace you may have access to a medical waste or sharps container. Place the needle into the sharps container, again taking care that the needle points away from your body.



3. If you do not have access to a medical waste or sharps container you can still dispose safely using rigid plastic containers with screw top lids. Do not use glass containers as they are easily broken, causing twice the disposal problem.



4. Once you have placed the needle or syringe into the plastic container and screwed the lid on tightly, it can now be disposed of in the regular garbage (not the recycled). Syringes in fitpacks can also be disposed of in the garbage.



"I might be nasty and dangerous lookin' but if you keep y'r head on & remember this stuff you'll have no worries"



## What to do if you injure yourself on a discarded needle.

- Wash the area gently with soap and running tap water as soon as possible.
- Apply an antiseptic and a clean dressing.
- Obtain prompt medical advice from your local doctor or hospital emergency department, preferably within 24 hours.
- Place the needle in a rigid plastic container and take it with you to your doctor.

If your workplace does not have a procedure for safe disposal of needles and syringes, you may like to write to one. Contact W.A.S.U.A. on {08} 9227 7866 for any assistance you might need.

Information reproduced with kind permission from Marketing and Communications. Health Department of Western Australia Artwork and Layout by D Brockwell and P Gill. "Freddy Fit" by M. Durham

*Should you require further information or would like a pamphlet detailing this information, please contact Council's Health Service on 9411 3589.*